



KA220 HED-Progetto n. 2021-1-IT02-KA220-HED-000032223

**Cli-CC.HE**

Climate Change, Cities,  
Communities and Equity in Health

# The Cyprus Institute



University of  
Belgrade



**iscte** INSTITUTO  
UNIVERSITÁRIO  
DE LISBOA

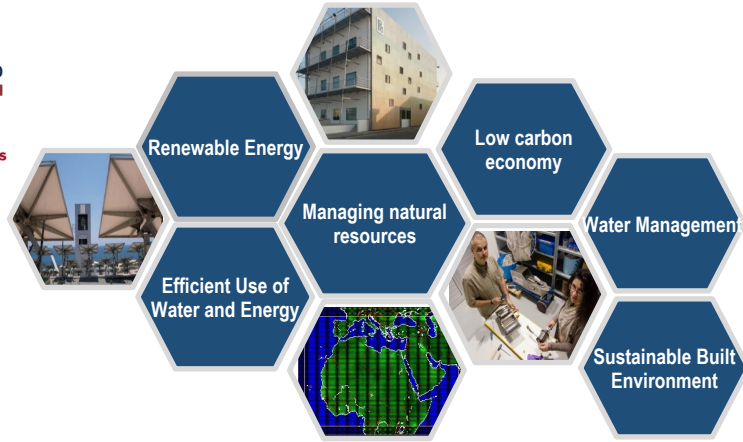
## Organizational profile and expertise of CyI



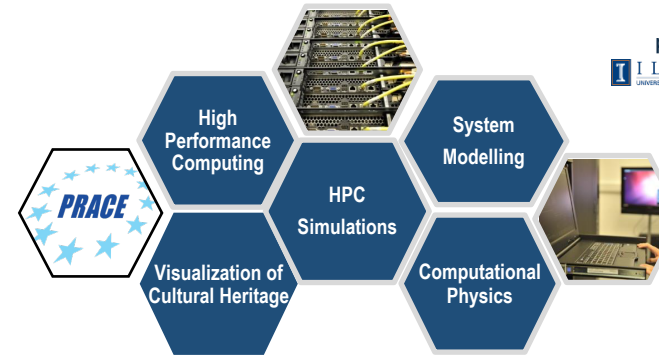
A **RESEARCH AND EDUCATIONAL INSTITUTION** suited to a knowledge economy

A **EUROPEAN INSTITUTION** for the Eastern Mediterranean and Middle East based in Cyprus

A **NON-GOVERNMENTAL, NON-PROFIT INSTITUTION** advancing peace and prosperity in the region using Science, Technology and Innovation.



Energy, Environment & Water (EEWRC)

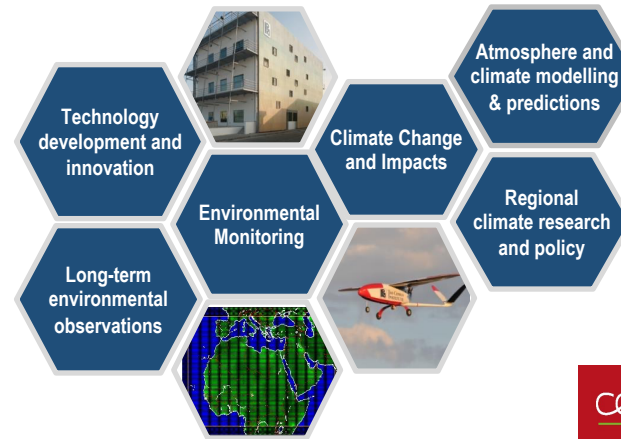


Computation-Based Science & Technology (CaSToRC)

Science & Technology in Archaeology and Culture (STARC)



Climate and Atmosphere (CARE-C)



**Cli-CC.HE**  
Climate Change, Cities,  
Communities and Equity in Health

**Research facilities**



**High-Performance  
Computing Facility**



**Mobile Research  
Infrastructure for  
Heritage Science**



**Cyprus Atmospheric  
Observatory**



**Visualisation and  
Imaging Laboratory**



**Art Characterization  
Laboratory**



**Unmanned Systems  
Research Laboratory  
(USRL)**



**Linear Fresnel  
Facility (LIFE)**



**Solar Research  
Facility (PROTEAS)**



**Facility for Chemical  
Analyses (FCA)**



**Instrumentation  
Laboratory  
& Nano-Lab Facility**



University of  
Belgrade

**THE CYPRUS  
INSTITUTE**  
RESEARCH • TECHNOLOGY • INNOVATION

**iscte** INSTITUTO  
UNIVERSITÁRIO  
DE LISBOA

### Team members



**Salvatore Carlucci**

*Professor*

- Indoor environmental quality,
- Outdoor thermal comfort assessment,
  - Building performance simulation,
- Building physics and energy behaviour of buildings



**Georgios Artopoulos**

*Assistant Professor*

- Immersive and virtual environments,
- urban modeling and digital simulation,
- development of technology-enhanced user-driven tools for social resilience and inclusion



**Panos Hadjinicolaou**

*Associate Professor*

- Global atmospheric chemistry,
  - Regional climate modelling,
- Dynamical downscaling of climate,
- Impacts of climate change extremes,
  - Climate statistics



**Josephine Stemmer**

*Division Coordination/Officer*

Project and financial Officer



**Ioanna Kyprianou**

*PhD candidate*

Research and technical support



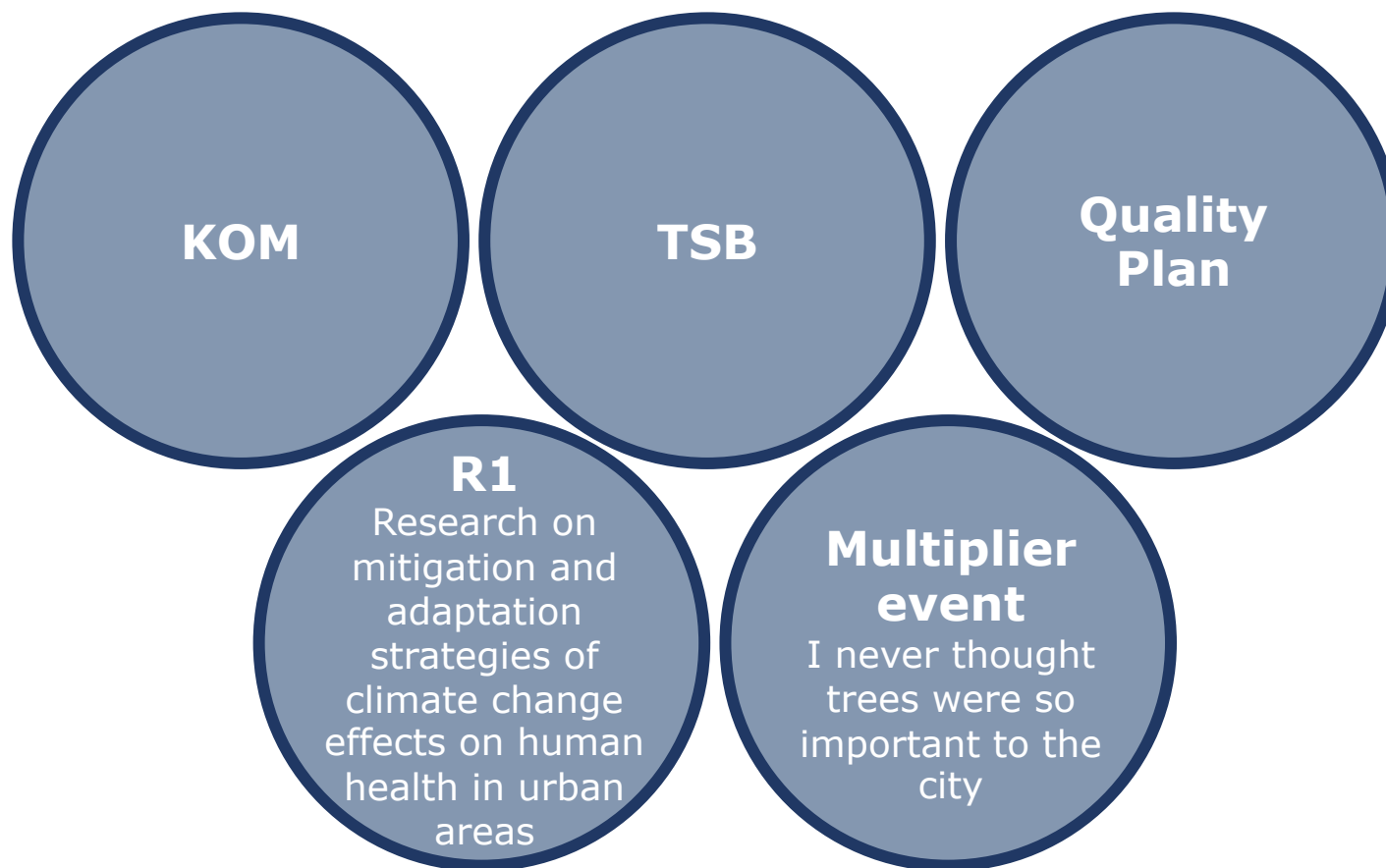
University of  
Belgrade



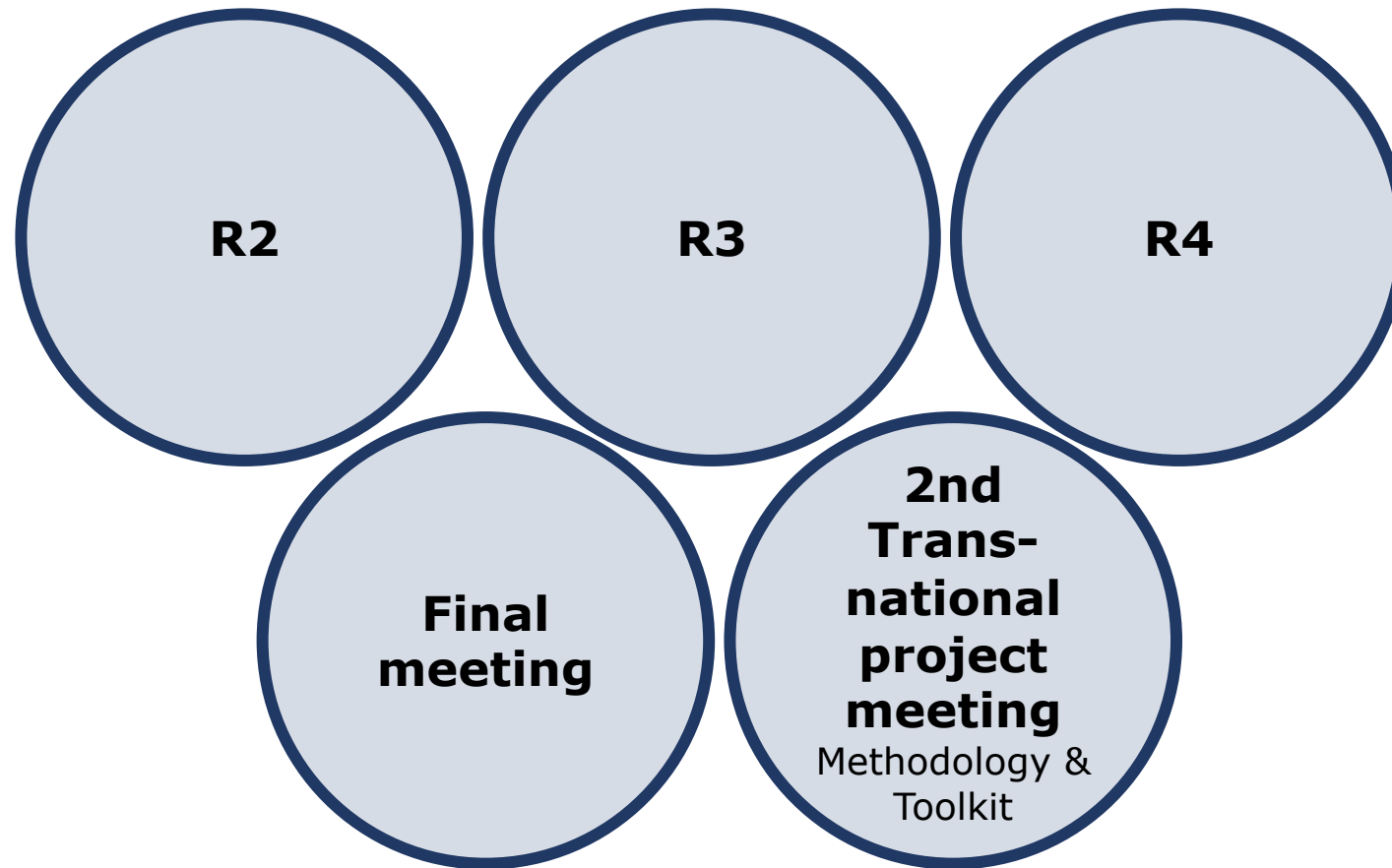
iscte

INSTITUTO  
UNIVERSITÁRIO  
DE LISBOA

## Main contributions in CliCCHE



## Other contributions in CliCCHE



**Cli-CC.HE**  
Climate Change, Cities,  
Communities and Equity in Health

**Thank you**

s.carlucci@cyi.ac.cy  
i.kyprianou@cyi.ac.cy



University of  
Belgrade



**iscte**

INSTITUTO  
UNIVERSITÁRIO  
DE LISBOA