

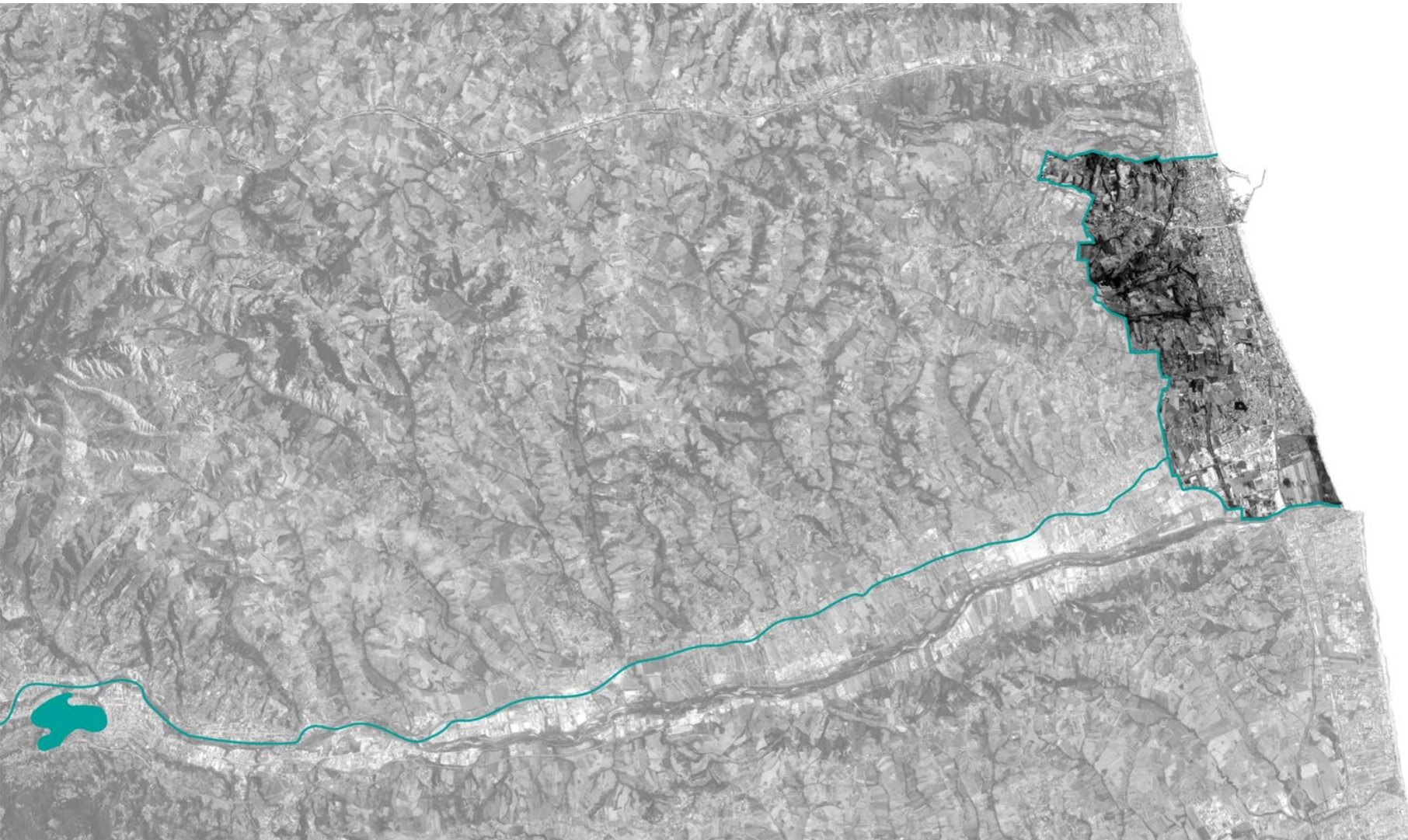
Teachers Training Workshop

Belgrade, June 16-17, 2022

Session 3: Application and impacts

Presentation of Cities and Districts associated to the project: San Benedetto del Tronto

Federica Ottone - UNICAM



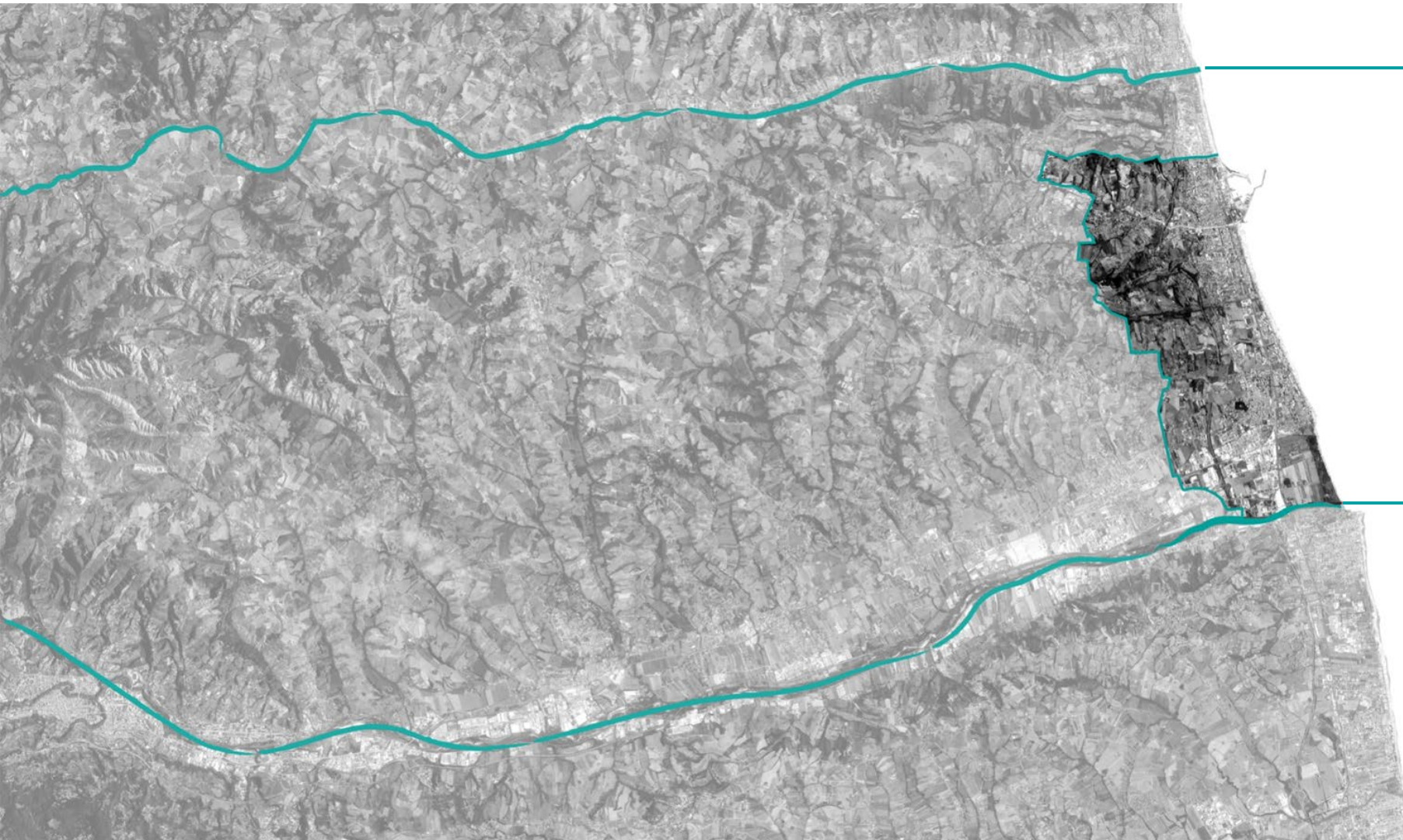
Marche Region

San Benedetto del Tronto

Population **46.976**
Area **25 km²**
Altitude **4 mslm**



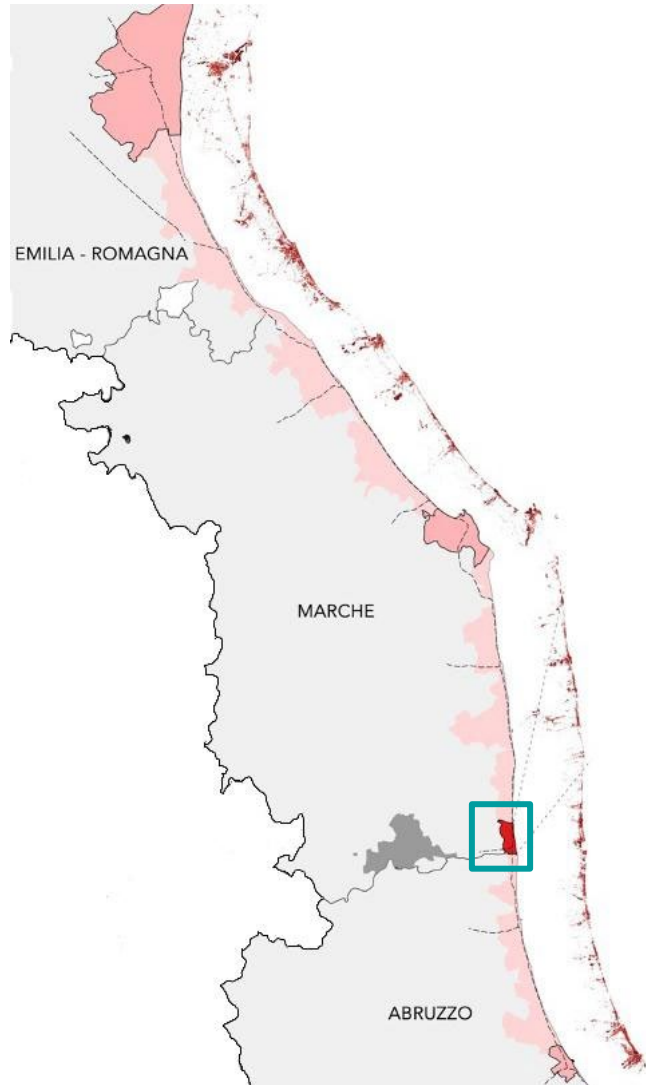
Tesino River



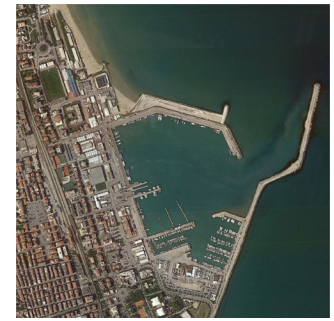
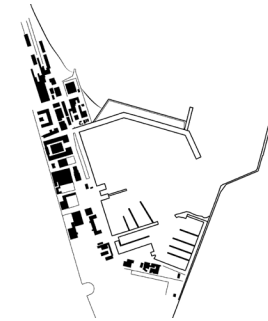
Tronto River

Adriatic city





Port infrastructure

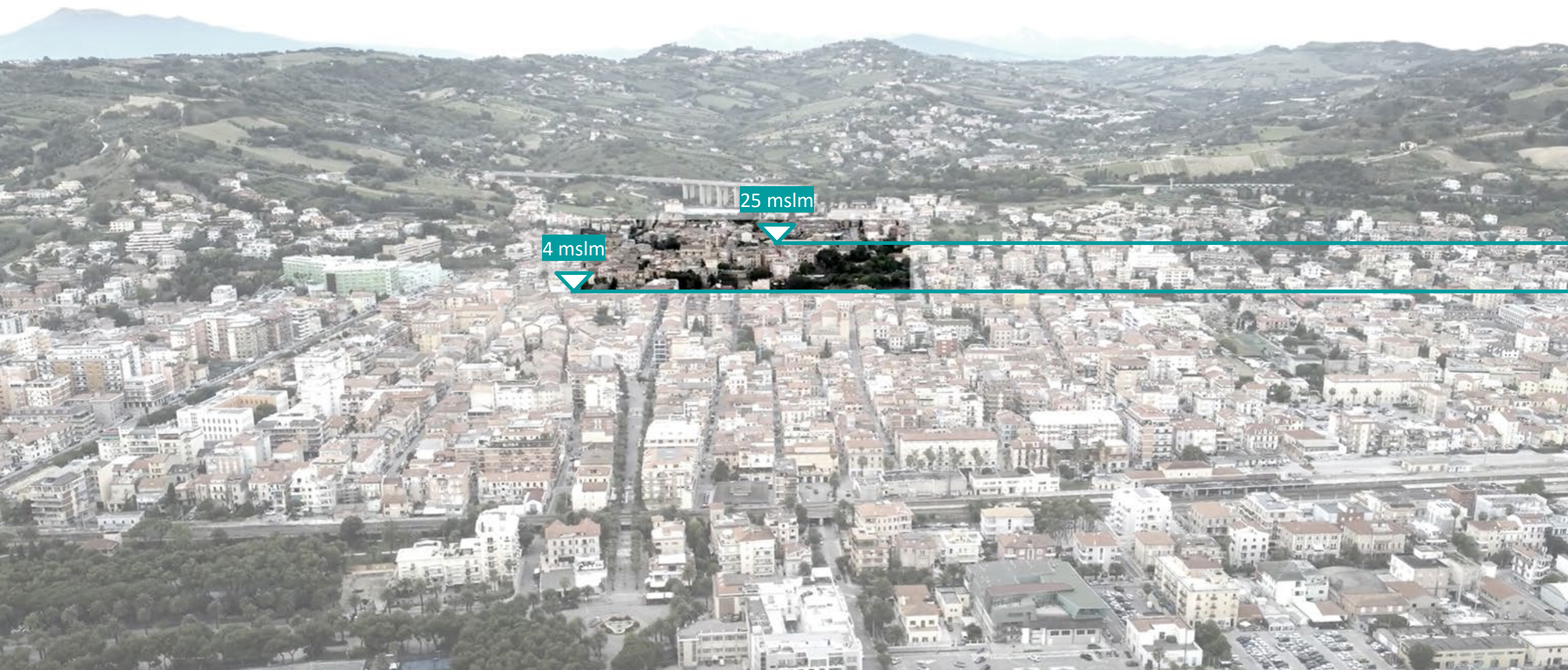


Railway

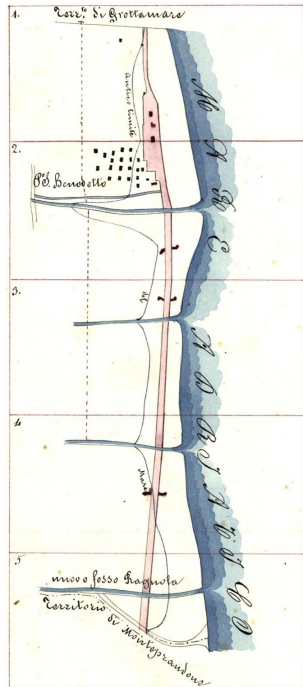
Adriatic state street

Adriatic highway

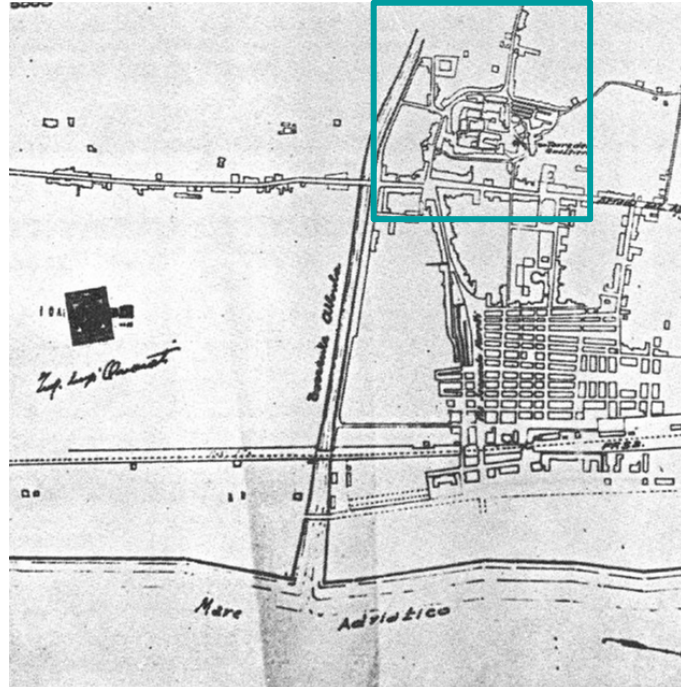




First historical buildings



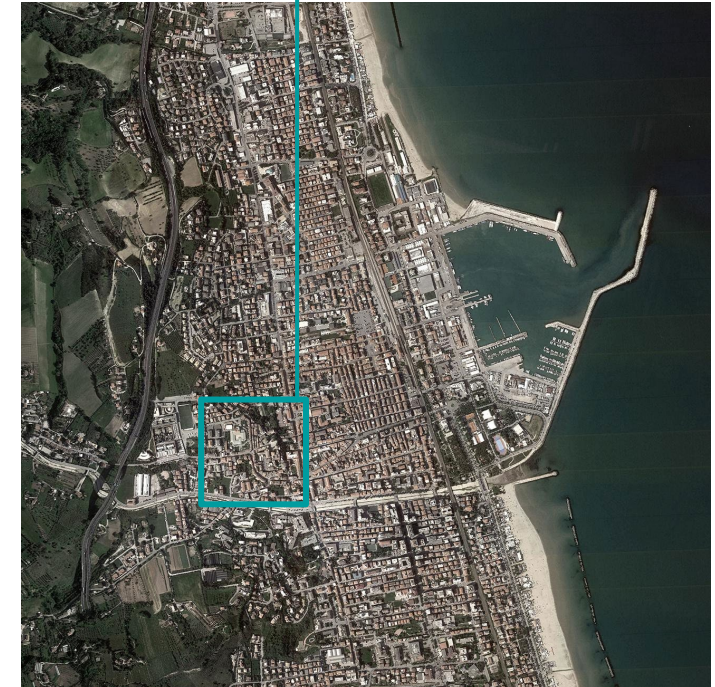
Cadastral 1872



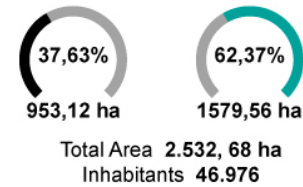
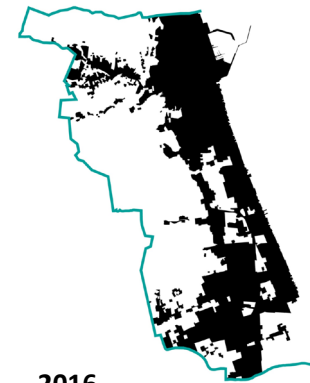
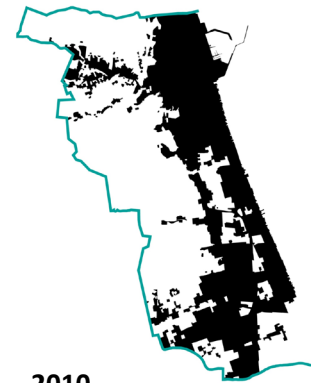
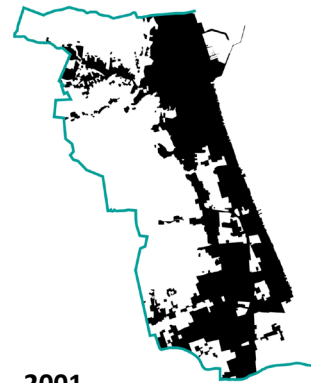
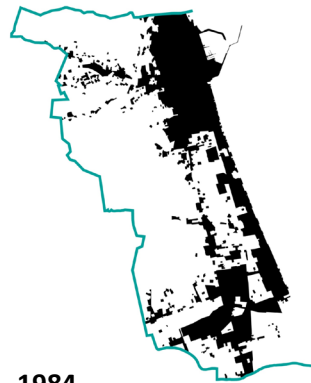
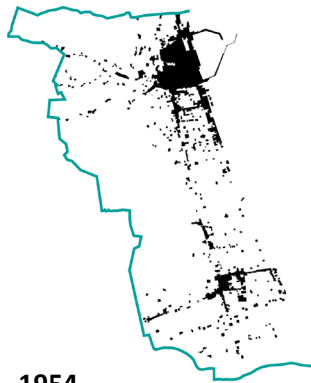
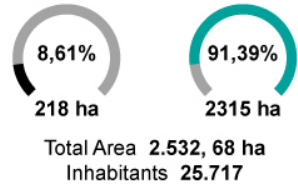
Cadastral 1921



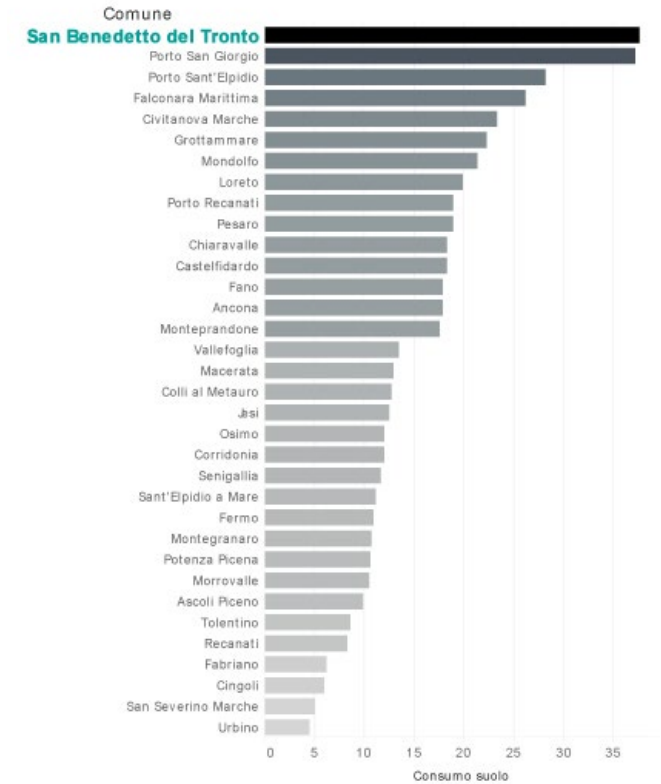
Aerial image 1954



Aerial image 2022



Land use of the Marche Region Municipalities inhabitants > 10.000



Source: ISPRA, 2018



Tourism 2021

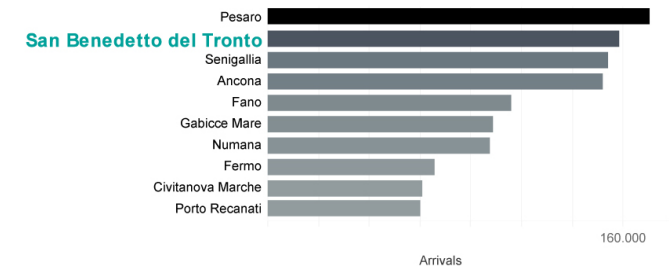
Arrivals

154.449 people

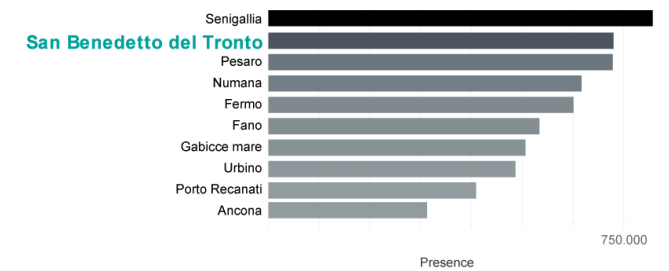
Presence

708.298 people

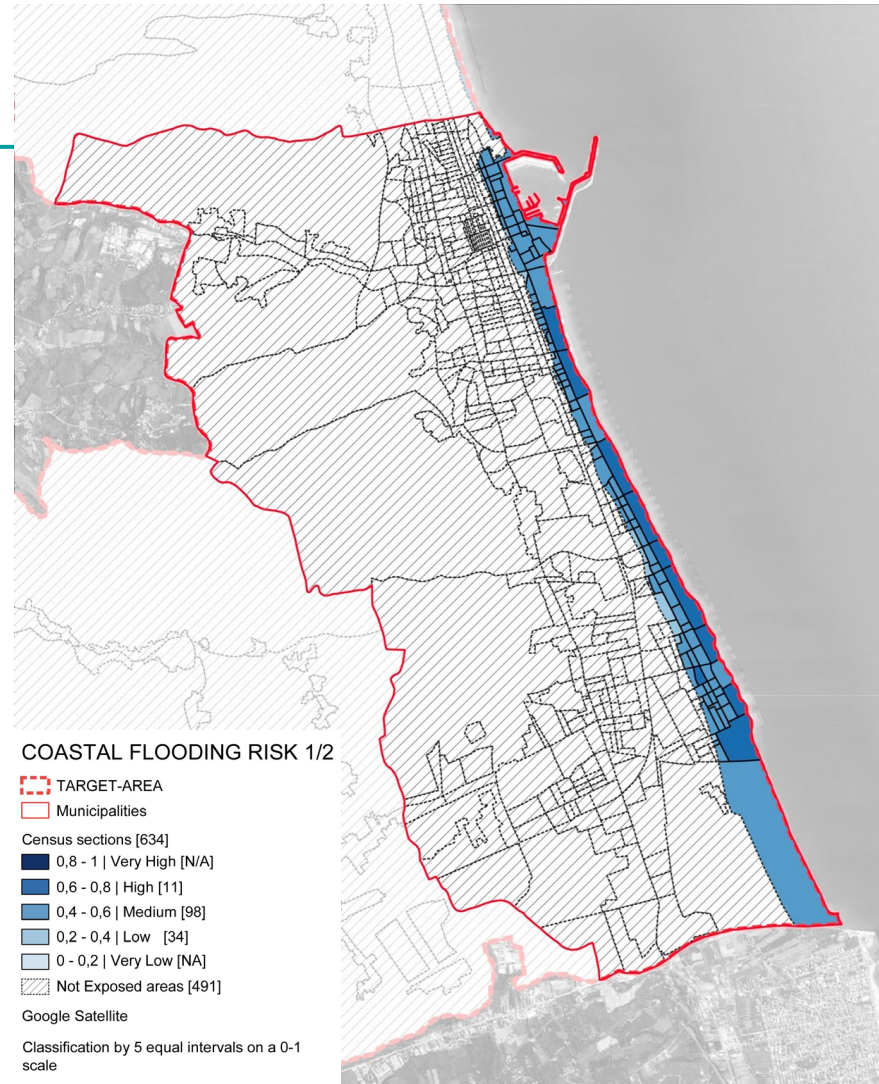
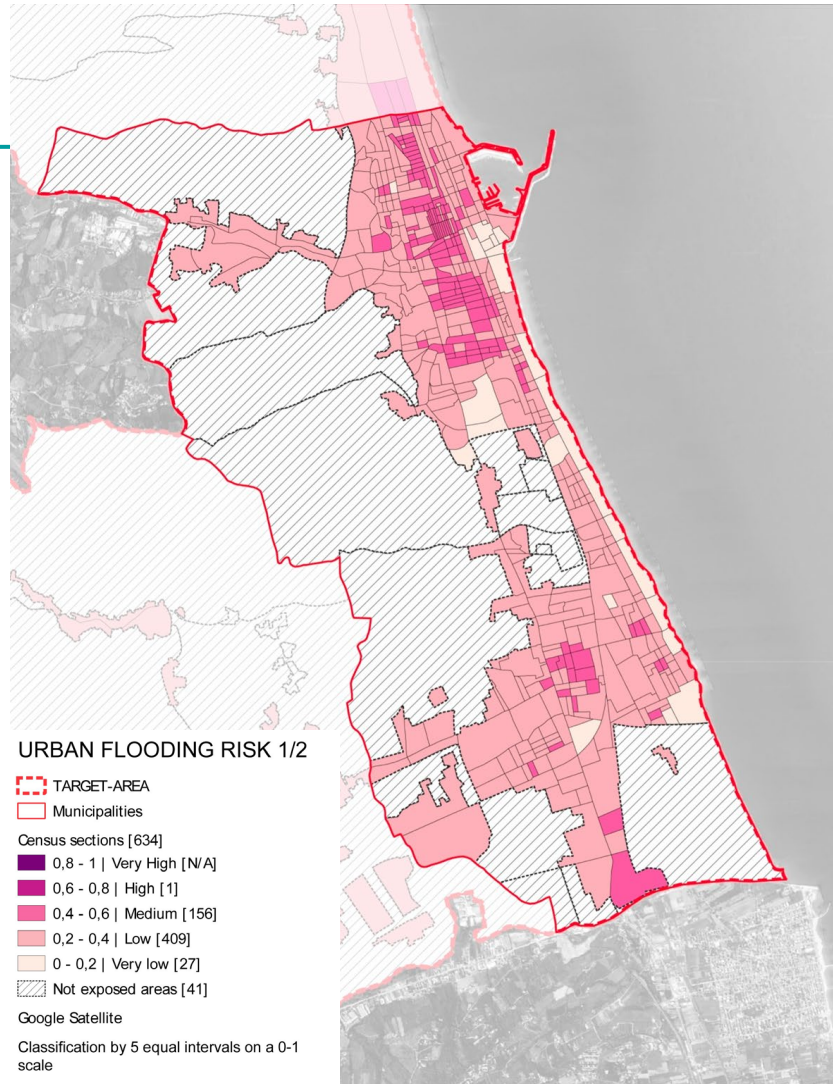
Top 10 Municipalities by number of arrivals



Top 10 Municipalities by number of presence



Source data: Osservatorio regionale del Turismo, 2021



Risk of damage to urban structures and people from consequences of extreme weather events

Flooding of 1970

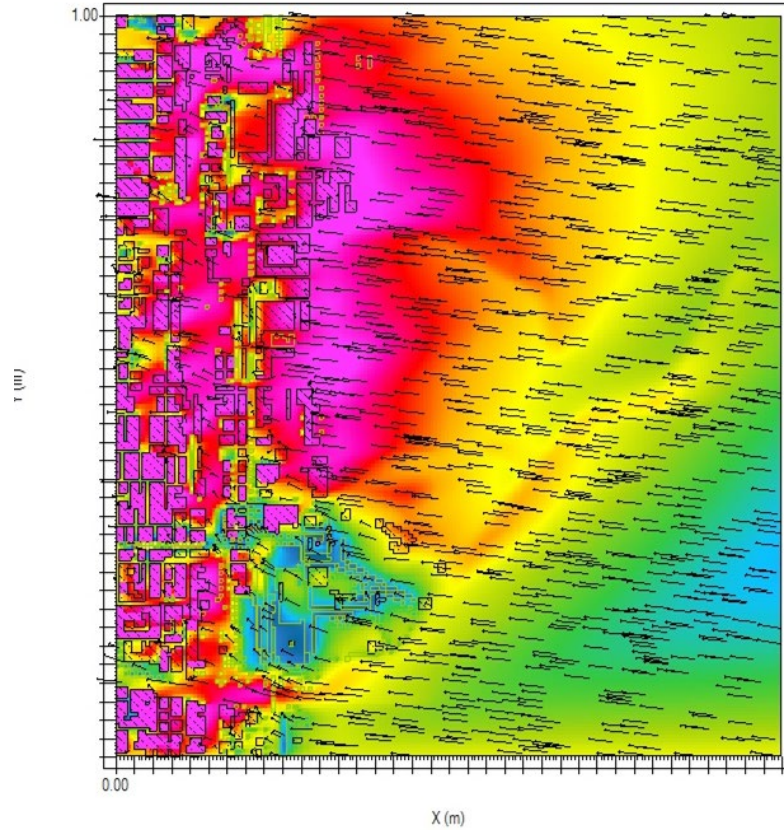


Maps source: Interreg Italy-Croatia, 2020

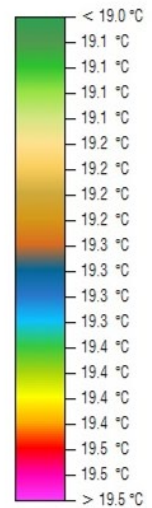


Figure 1: SBT Model Macro 14.00.01 12.08.2012

x/y Cut at k=0 (z=4.0000 m)



Potential Air Tempe



Min: 19.0 °C
 Max: 19.5 °C

Flow v

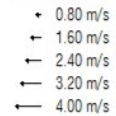
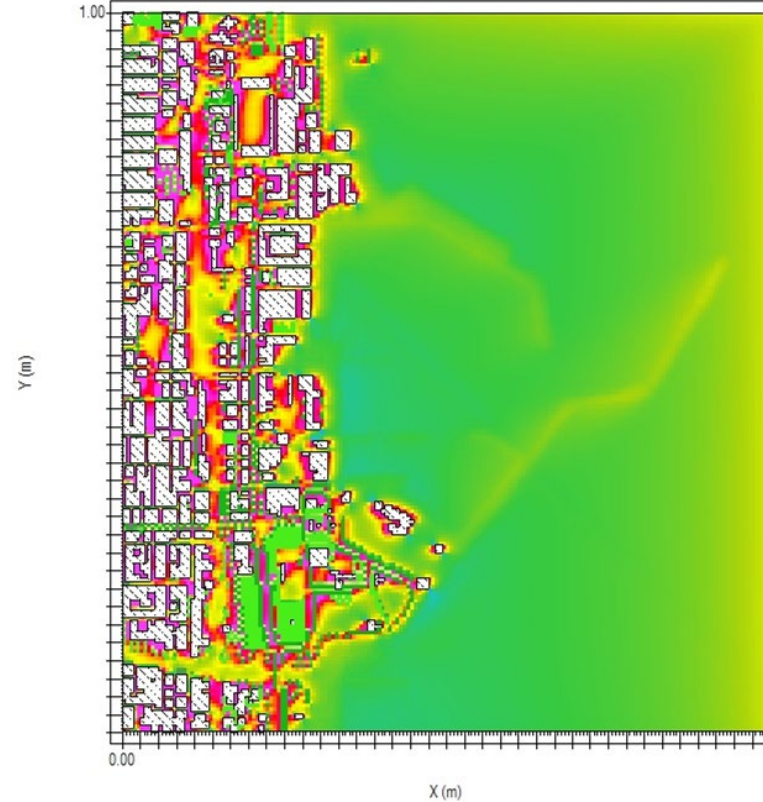
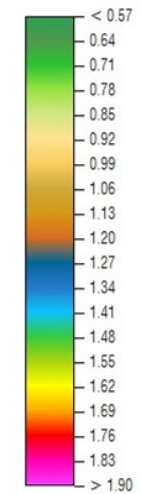


Figure 1: SBT Model Macro 12.00.01 12.08.2012

x/y Cut at k=0 (z=4.0000 m)



PMV



Min: 0.57
 Max: 1.97

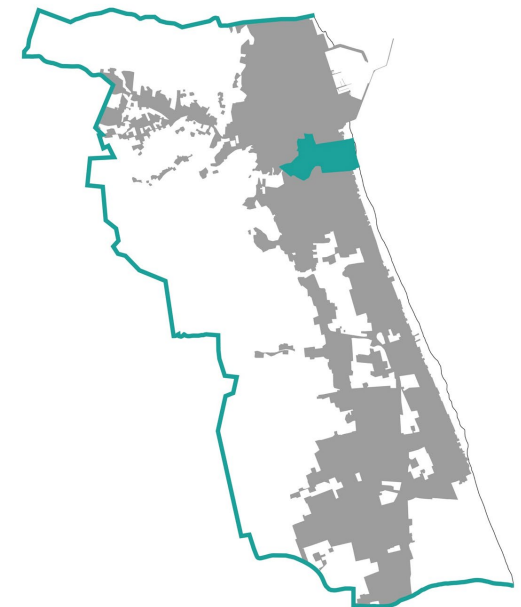
Processing Graziano Enzo Marchesani.

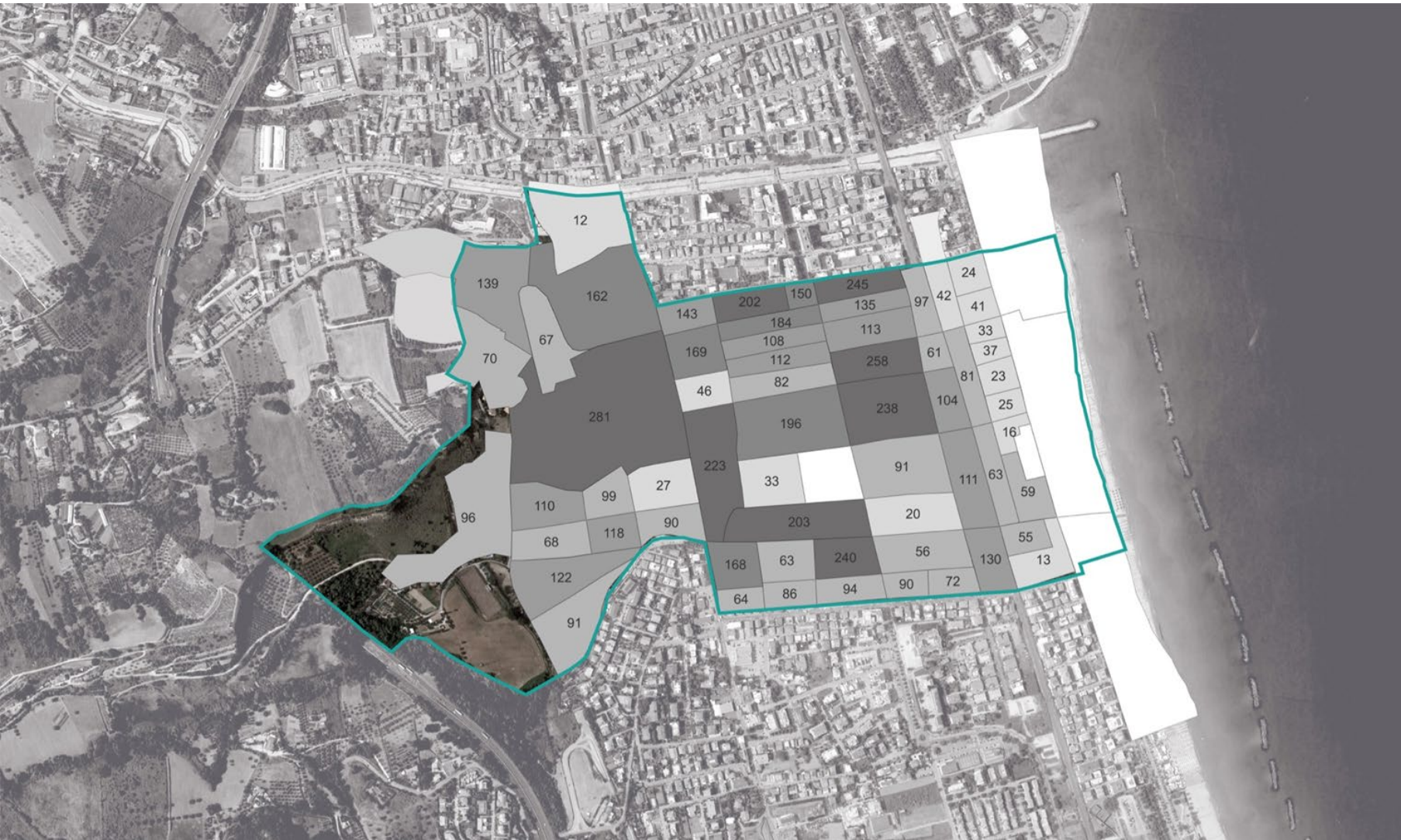


Sant'Antonio District

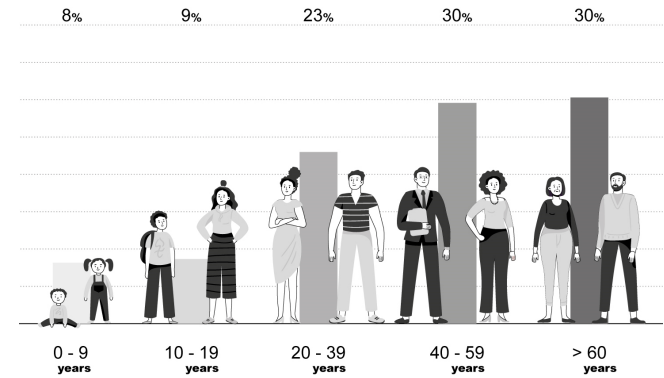
Population
6.452 people

Area
96,9 ha

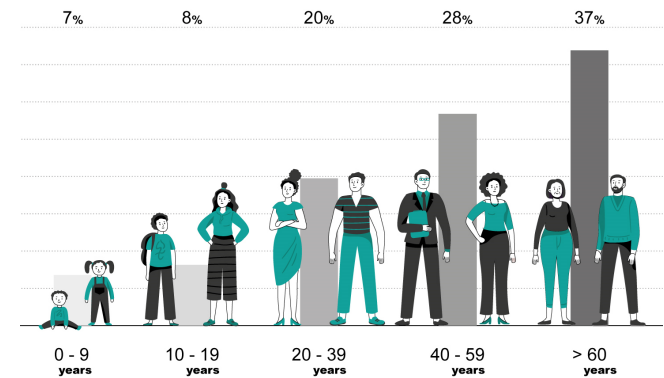




Resident population by age group



San Benedetto del Tronto City

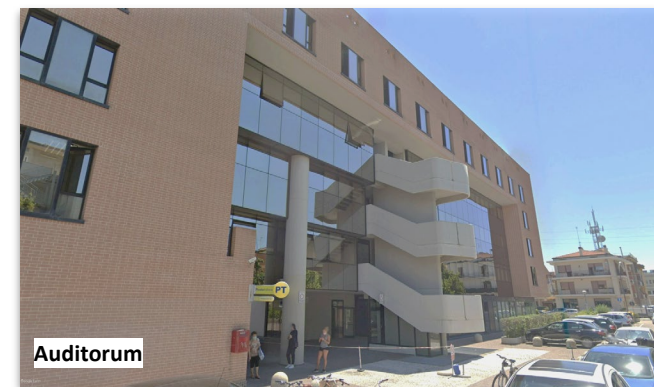


Sant'Antonio District

Source data: ISTAT, 2020



Public services

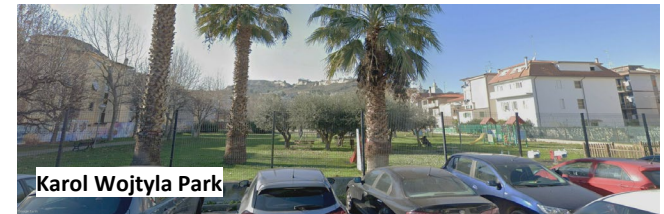


Source: Google streetview, 2022





Green areas



Source: Google streetview, 2022





Open areas



Pericle Fazzini square



Piazza Cerboni



Intersection between via Sicilia and via Silvio Pellico

Source: Google streetview, 2022



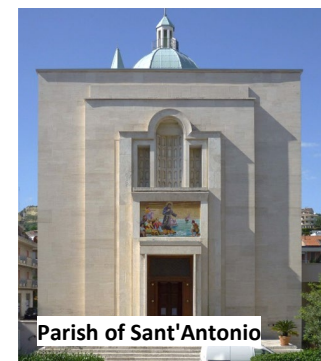
Meeting places



San Benedetto del Tronto waterfront



Parish association



Parish of Sant'Antonio

Source: Google streetview, 2022



Main commercial activities



Source: Google streetview, 2022



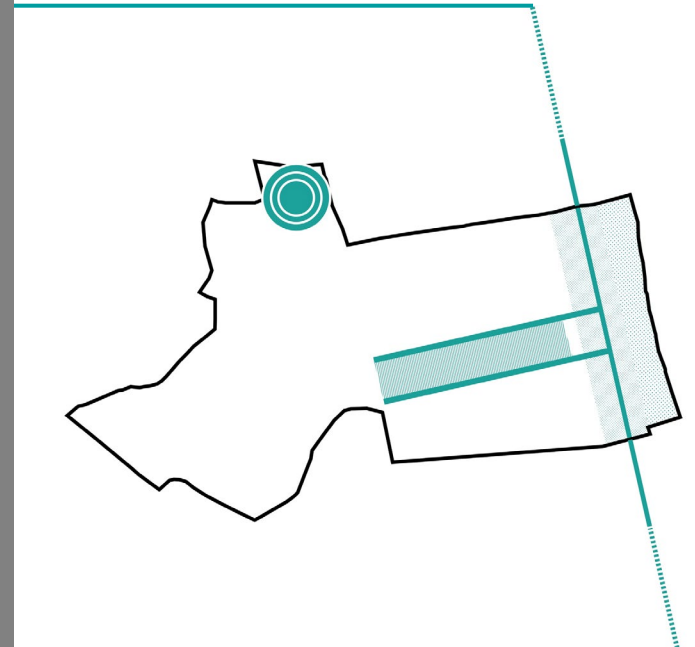


Main historical buildings



Source: Google streetview, 2022







The “Comitato di Quartiere Sant’Antonio” and the Sant’Antonio Parish are very present in the neighborhood with activities, events and reports.

Sources: www.ilmascalzone.it/archivio_storico/2012/05/parco-mio-ti-curo-io/
www.socialcicero.com/la-mappa-dei-parchi-giochi-di-san-benedetto-e-grottammare/



An aerial photograph of a coastal city, likely Genoa, Italy, showing a dense urban area with many buildings, a harbor with a pier, and a large forested area in the foreground. The sea is visible in the background.

Thank you very much!

mariafederica.ottone@unicam.it

clicche.erasmus@gmail.com