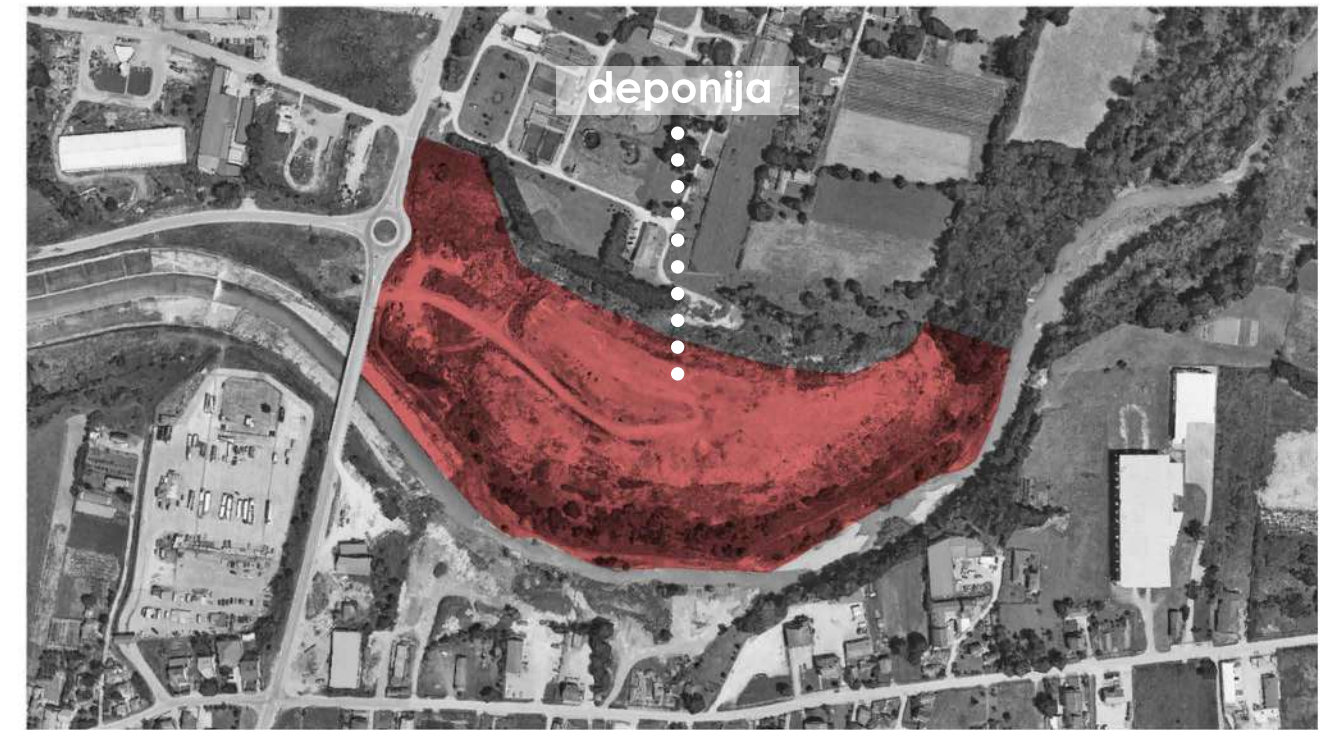
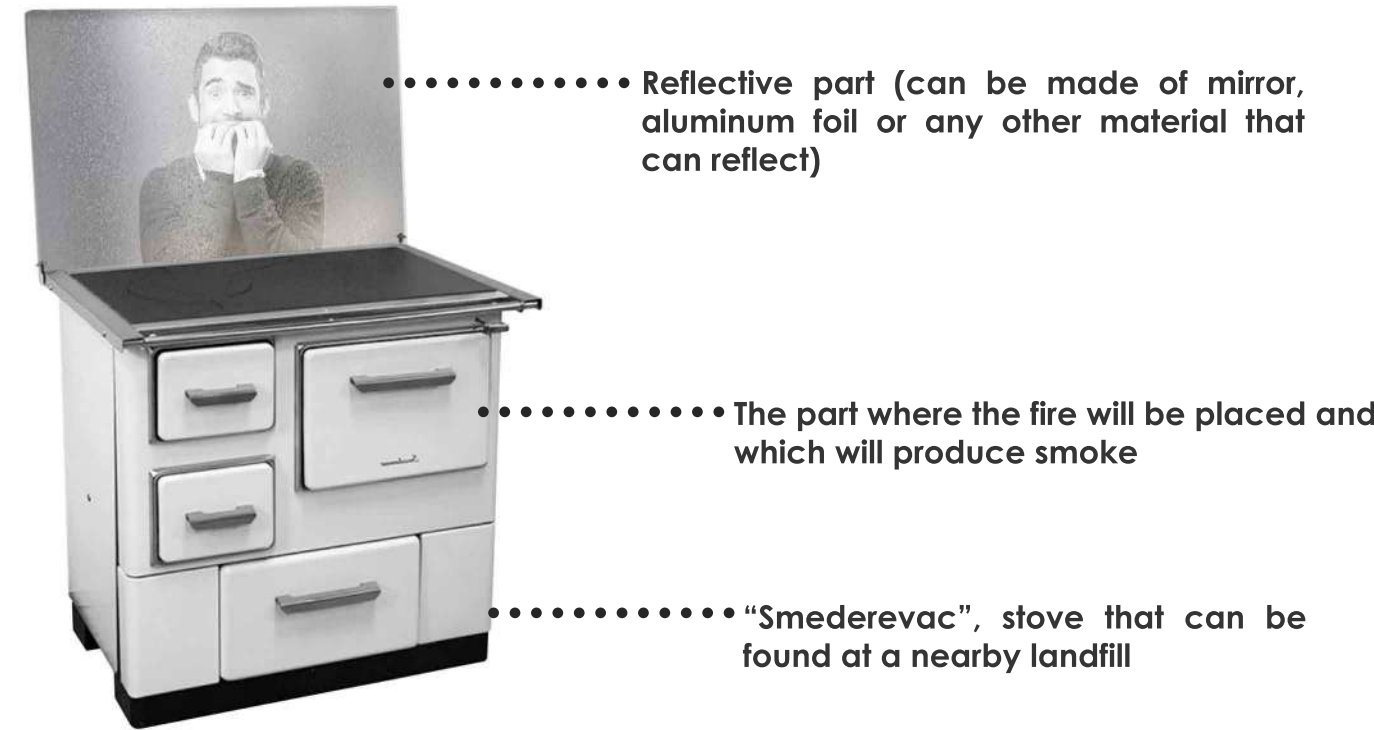
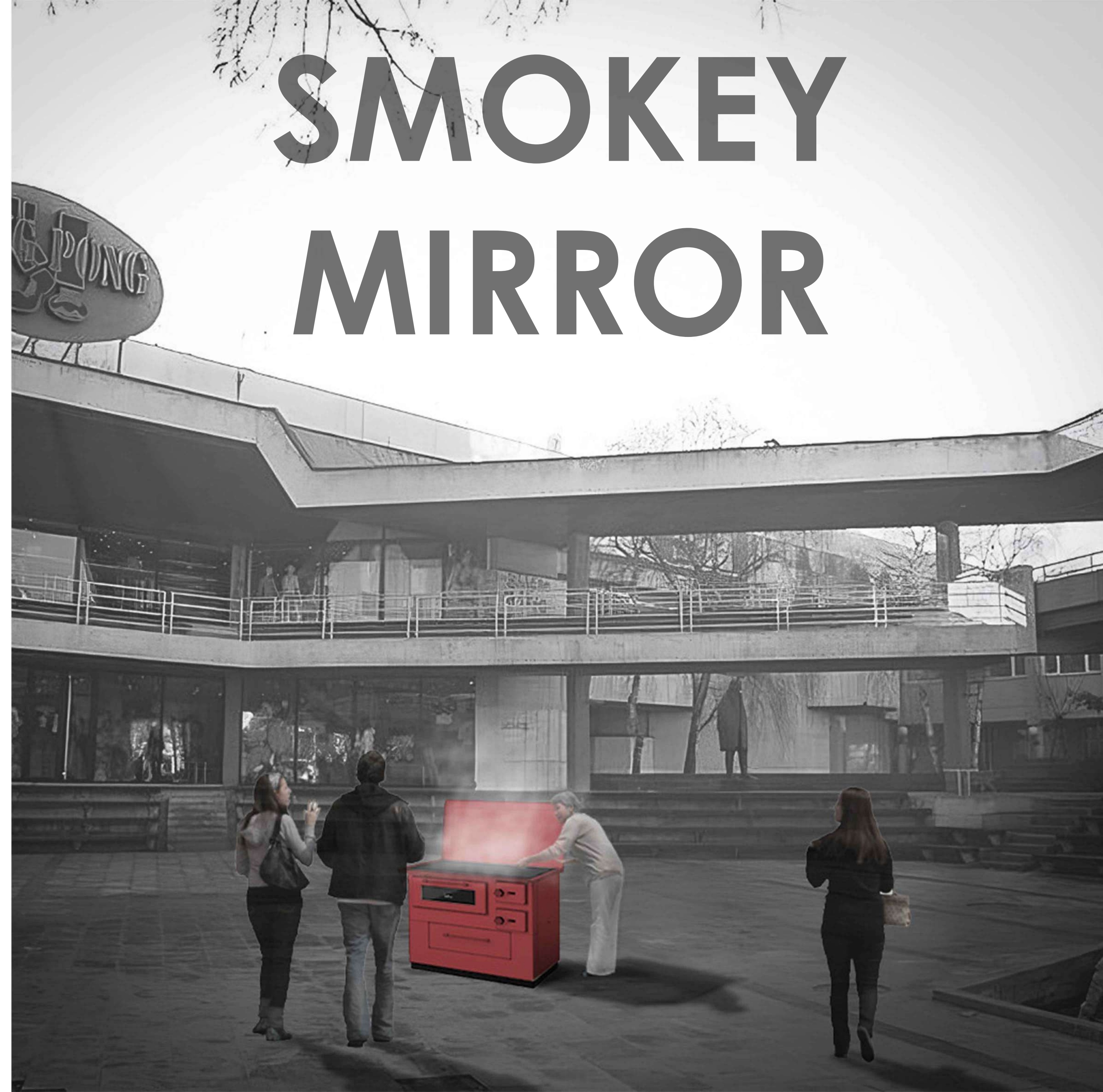


Valjevo is located in a valley, without enough air flow, so in periods when the temperature drops and the air humidity increases, a thick yellow-gray cloud appears behind the city. In the annual reports of the Environmental Protection Agency, Valjevo was marked as one of the cities with the most polluted air in Serbia. Since 2012, when measurements have been taken, the air in Valjevo has been classified as category III,

excessively polluted, due to increased concentrations of suspended PM10 particles. Valjevo is at the very top in Serbia, both in terms of multiple exceeding of limit values, and in terms of the number of days with exceeding. Every year in Valjevo, 220-500 people lose their lives prematurely due to exposure to air pollution, which places this city in the middle with the highest proportion of premature deaths in Serbia.



All necessary material for installations can be found at the city landfill.



# SMOKEY MIRROR